

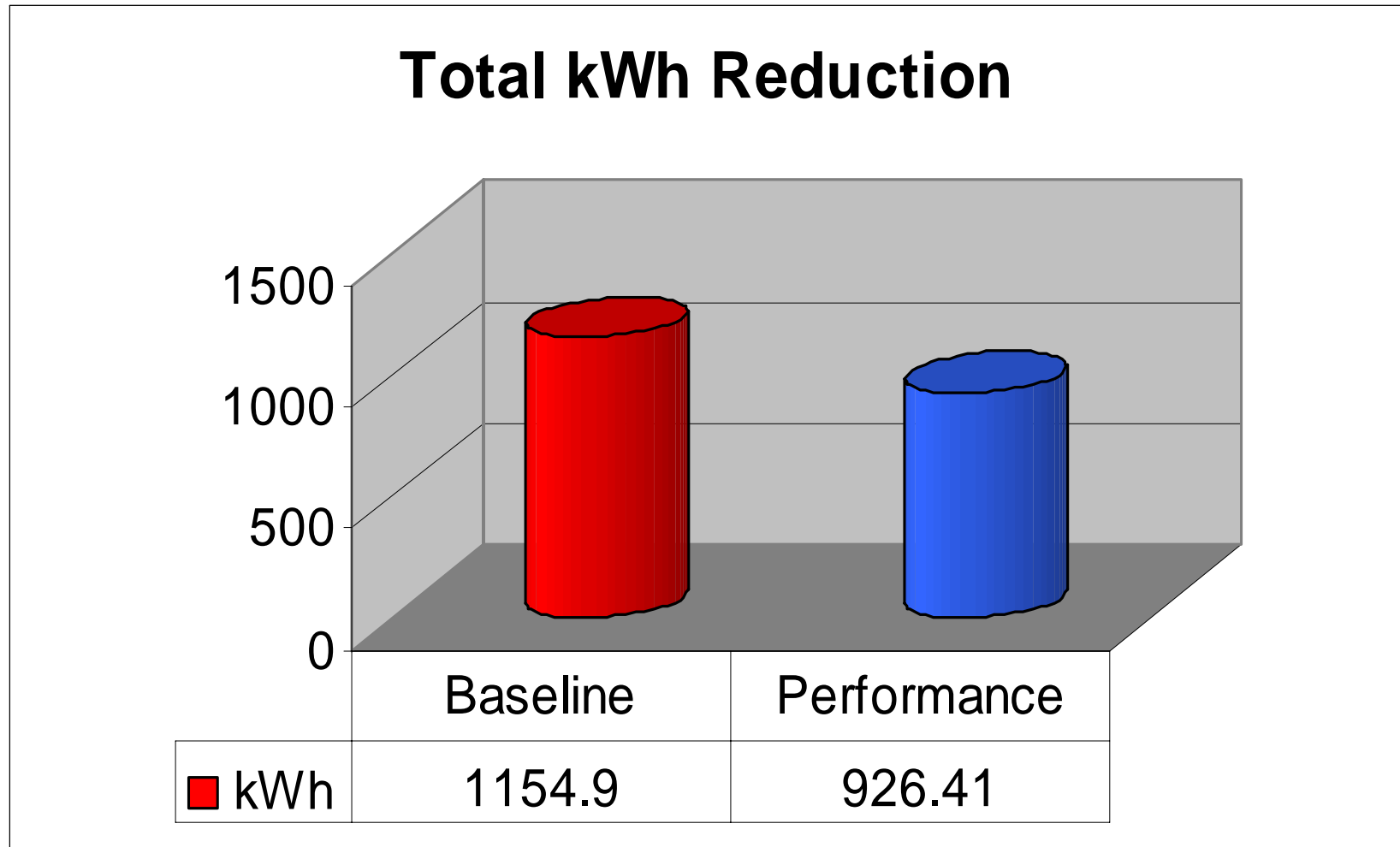
# PERFORMANCE OF PERMAFROST™ BY HONEYWELL CORPORATION

THIS TEST WAS MONITORED BY HONEYWELL CORPORATION ON A 40 HP TRANE CHILLER AT KAPLAN'S BEN HUR DEPARTMENT STORE. THE TEST WAS CONDUCTED TO EVALUATE THE CLAIMS OF PERMAFROST™ THE POST TREATMENT DATA WAS COMPARED TO THE BASELINE PERFORMANCE, RESULTING IN AN OVERALL IMPROVEMENT OF 19.8%

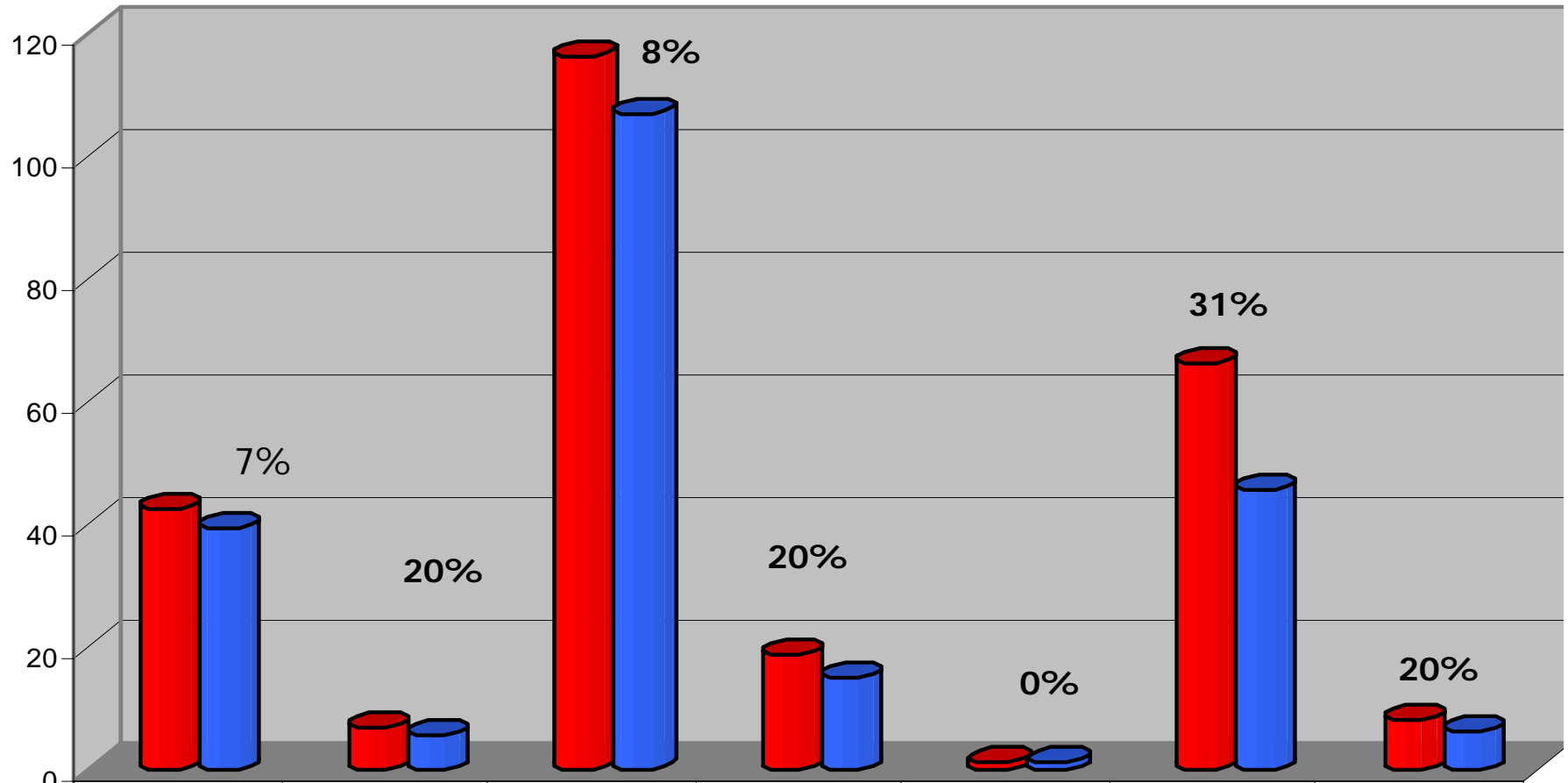
THE TEST WAS CONDUCTED ON SITE TAKING IN CONSIDERATION THE FOLLOWING PARAMETERS

INDOOR TEMPERATURE  
AMBIENT TEMPERATURE  
HUMIDITY, RELATIVE HUMIDITY  
KW  
KWH  
POWER FACTOR  
KVA  
AMPS  
RI IN TIME

# KAPLAN'S/HONEYWELL PERFORMANCE RESULTS

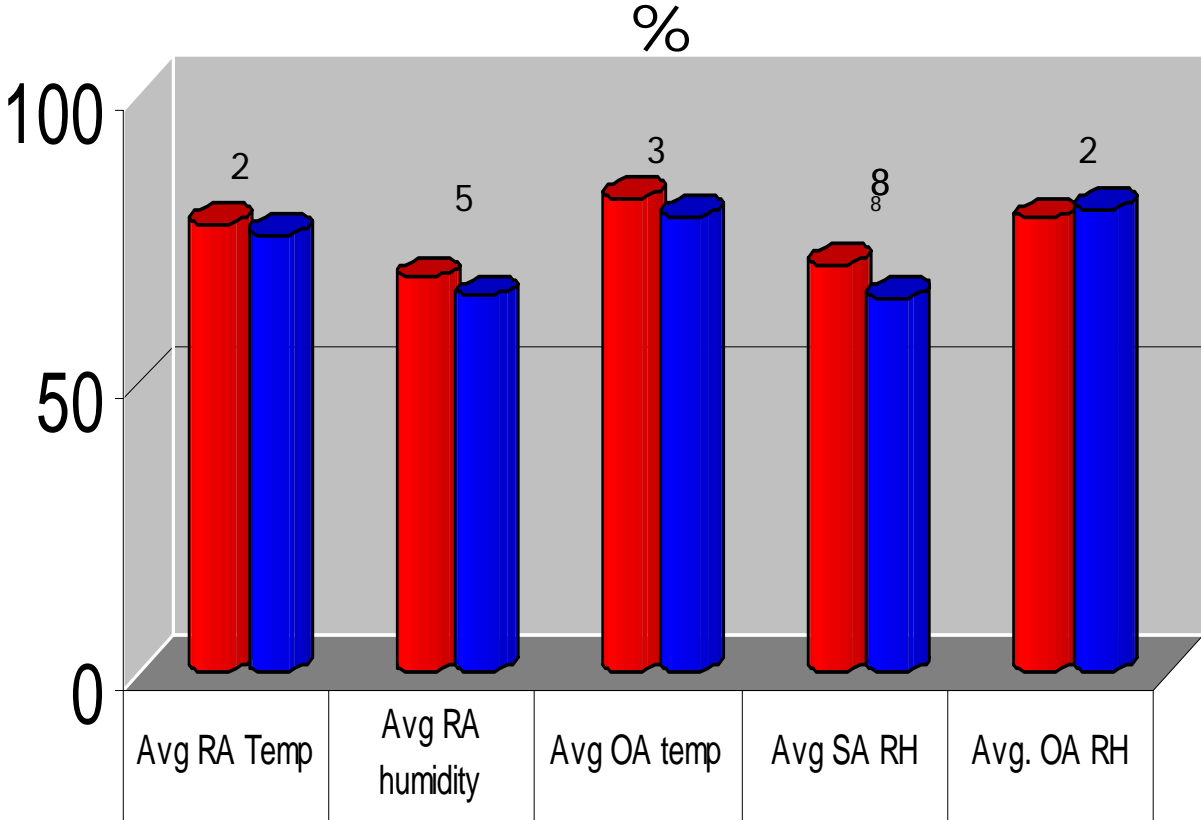


## Kaplan/Honeywell Performance Results



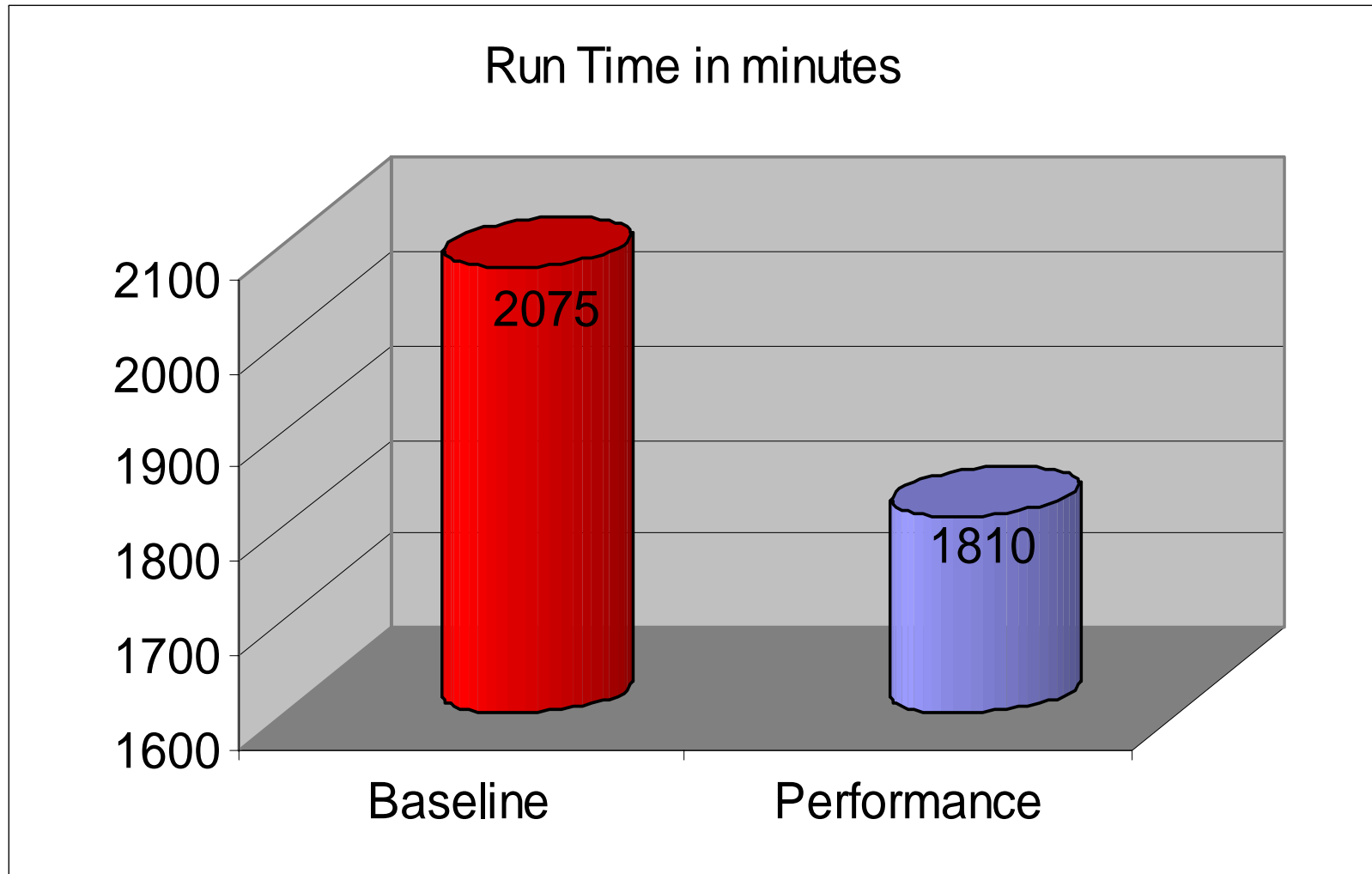
■ Series1	42.42	6.84	116.55	18.75	0.87	66.5	7.88
■ Series2	39.3	5.48	107.3	15.04	0.87	45.7	6.32

# Temperature and Humidity



Baseline	77.4	68.2	82	70.6	78.4
Performance	75.8	65	79	64.6	79.8

# Reduction in Run-Time 12.7%



# PERMAFROST RUTH'S CHRIS STEAK HOUSE PERFORMANCE

- DATA COMPILED USING ACTUAL POWER BILLS PROVIDED BY RELIANT ENERGY AND SAN DIEGO GAS AND ELECTRIC
- RESULTS WERE CALCULATED USING A 4 MONTH TIME-FRAME COMPARISON
- AVERAGE MONTHLY SAVINGS \$ 2,512
- AVERAGE PAYBACK 5.33 MONTHS

# Ruth's Chris Energy Savings

